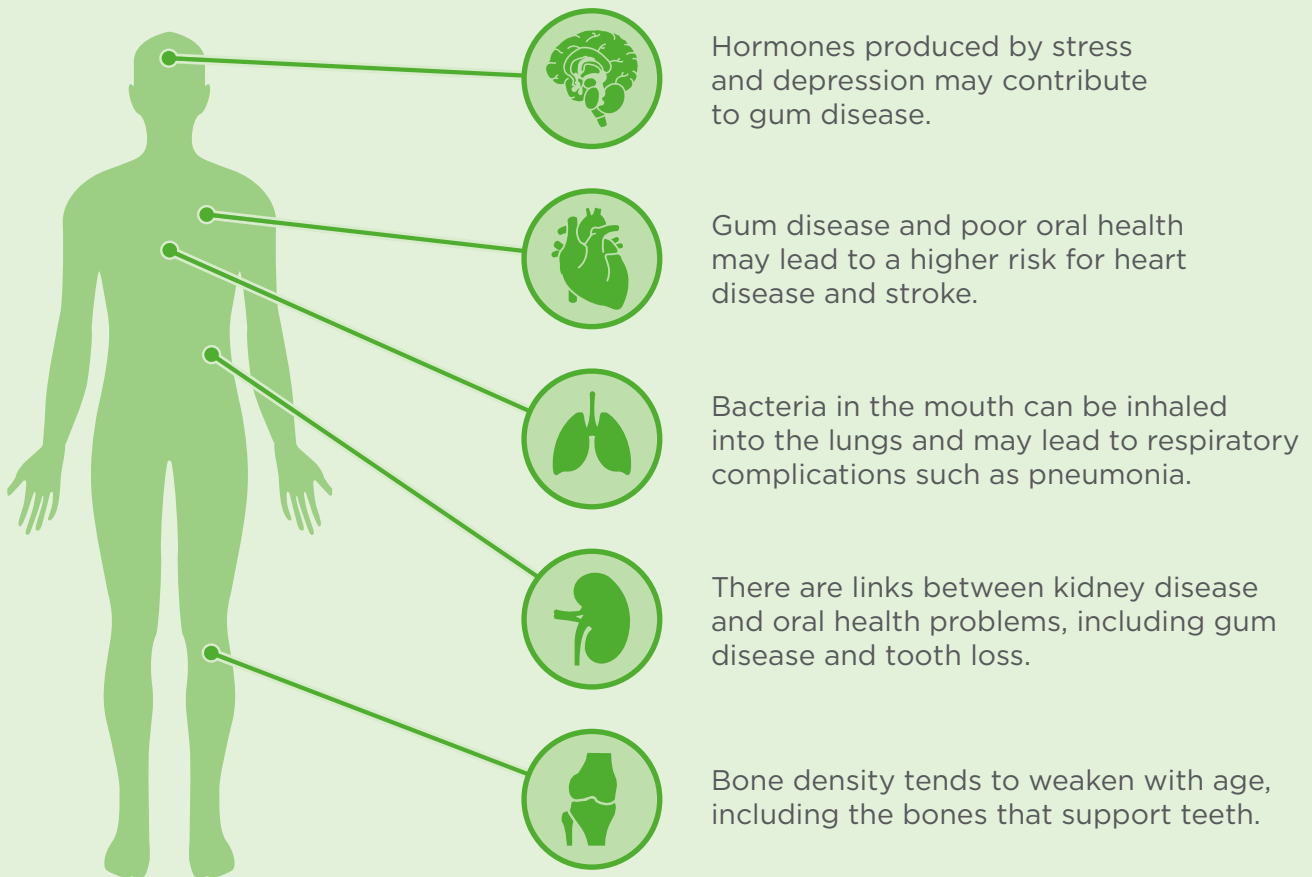


# Oral Health is Connected to Overall Health



The health of your teeth, gums and mouth are connected to your overall health. By utilizing your preventive benefits, your dentist can catch oral health problems before they become potentially painful or costly. Your dentist can also check for early signs and symptoms that may be linked to certain health conditions.

## Did you know that more than 120 medical conditions can be detected by signs and symptoms in the mouth?



Diabetic patients are more likely to have gum disease. Non-diabetic patients with poor oral health may be more susceptible to developing diabetes.



Oral cancer can develop and can spread throughout the body, so early detection is important.



**The Power of Smile™**  
Learn more about how your oral health connects to your overall health at:  
[DeltaDentalMN.org](http://DeltaDentalMN.org)